

SAVANTE

LASER INSPECTION & MEASUREMENT

LUMENEYE

The all new Savante Lumeneye laser is the latest in subsea laser metrology tools designed specifically for use in the inspection and measurement of subsea assets.

Available for diver (eyesafe) or ROV operation, Lumeneye can be integrated into any inspection program providing high resolution metrology, something that was not previously possible using acoustic technologies.

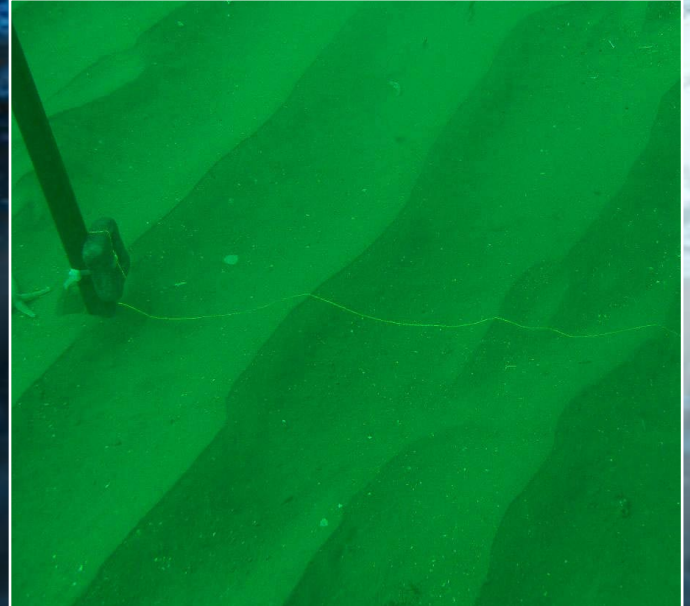
The speed and precision of pipeline or trenching surveys can be dramatically enhanced with the laser profiler which has been optimised for operations in turbid water.

Benefits

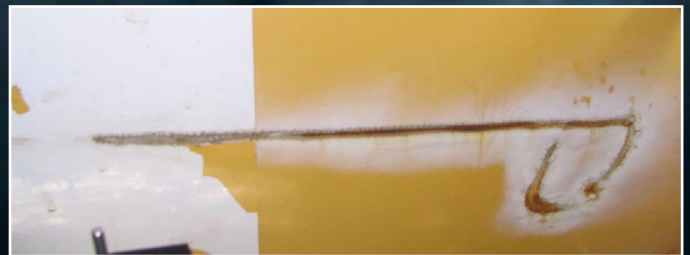
- Subsea metrology to <math><0.1\text{mm}</math> resolution and accuracy
- Higher resolution than sonar
- Faster than sonar profilers
- Fine laser line reveals subtle surface defects
- 4000m depth rated as standard
- 3D rendering capability
- Immune to acoustic noise.

Applications

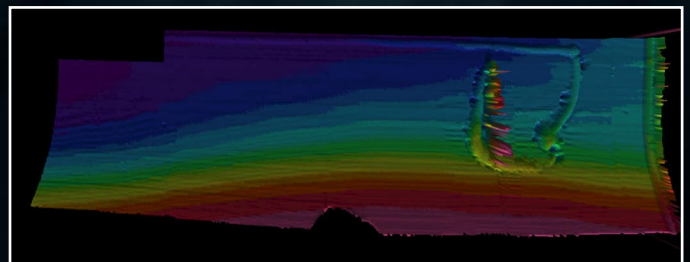
- Pipeline ovality – out of straightness measurements
- Pipeline damage metrology
- Ranging to structures
- Spool piece modelling



Laser profile on seabed



Subsea Pipeline surface damage (above) and 3D rendered laser model (below)



Measurements and profiles can be extracted from rendered laser model. Pipeline scar shown is 0.7mm deep and 8mm wide.



FIND US

Savante Offshore Services Ltd.
Riverside House
Riverside Drive
Aberdeen
AB11 7LH

CONTACT US

MOB: +44 7776 188 119 (24hr contact)
TEL: +44 1224 224 336
EMAIL: sales@savante.co.uk

WWW.SAVANTE.CO.UK

Registered with First Point Assessment 10050744

Savante Offshore Services Ltd. reserves the right to change the above specifications without notice.

SAVANTE

LASER INSPECTION & MEASUREMENT

Specifications

Environmental

Water depth: 4000m

Temperature: (operating) 1° - 35° C

Shock: 3 axis (operating) 30g peak,
6ms half-sine pulse

Optical

Window: Sapphire

Fan Angle: 40 degrees

Laser wavelength: 635nm (red) or 532nm (green)

Power: 20mW - Class IIIA (Max 35mW)

Mechanical

Maximum diameter: 31mm (1.2")

Length: 133mm (5.2") excluding connector

Weight in air: 240g excluding connector

Weight in water: 130g

Standard housing: Titanium

Standard connector: Wetcon BH-3-MP

Electronic

Voltage: 24V DC

Current: 0.3 A

Time to emission: under 10 seconds

FIND US

Savante Offshore Services Ltd.

Riverside House

Riverside Drive

Aberdeen

AB11 7LH

CONTACT US

MOB: +44 7776 188 119 (24hr contact)

TEL: +44 1224 224 336

EMAIL: sales@savante.co.uk

WWW.SAVANTE.CO.UK

Registered with First Point Assessment 10050744

Savante Offshore Services Ltd. reserves the right to
change the above specifications without notice.